

SING INSIDE: REGULAR GIVING AND WORKING WITH US

Thanks for your interest in becoming part of the Sing Inside community. Your support will help continue our vital work building confidence, learning new skills and breaking down stereotypes through community music-making.

This booklet outlines several ways you can support the delivery of our services. If there is a package that looks just right for you, please just follow the steps below. We can't wait to share our work with you.



Send us an email to info@singinside.org containing your full name, the package you'd like to go for, and your contact details.



One of our team will get back to you within **three working days**, to help you set things up and answer any questions you might have.



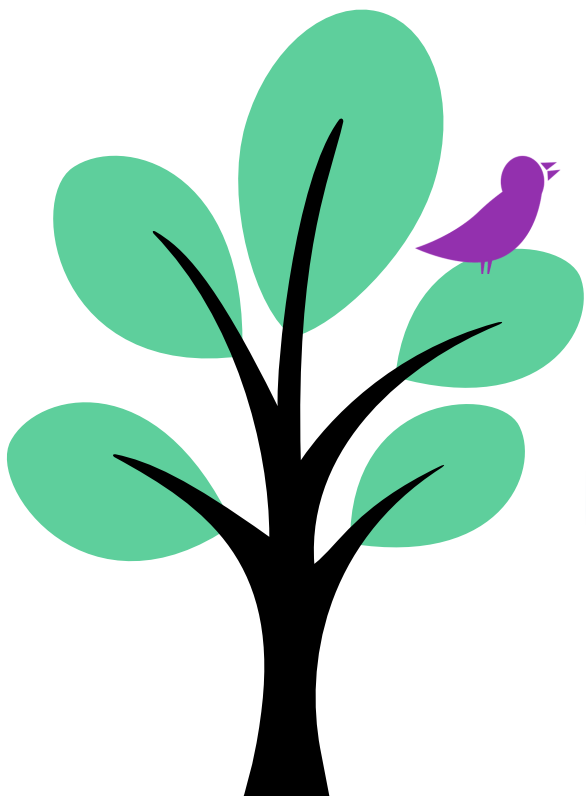
We'll check you're happy with how your money will be used, and **set up your payment**. You can do this either as a direct debit, a payment via Virgin Money Giving, or as a cheque - whichever you prefer.



If **none of the options here are quite what you're looking for**, but you'd still like to help, that's no problem - just get in touch on info@singinside.org and we can discuss some options.

Wren

Become a Friend of Sing Inside



Sing Inside friends provide the crucial, ongoing support we need to keep things ticking along. Your money can help us buy materials, music, and transport for volunteers and music leaders to deliver our workshops. We keep in regular contact with our Friends, and you can attend events, volunteer with us, and stay involved in our development and growth through our focus groups and discussion events, as well as attend our Friends' events to meet other supporters.

£5 per month

will supply music and equipment for up to 6 months

Access to our monthly newsletter and extra exclusive content on our mailing list
 Invitation to one Friends' event per year
 Opportunities to help shape our future via discussion groups, surveys and additional feedback mechanisms about our services and strategy

£10 per month

will supply music and equipment for up to one year

All of the above plus one free ticket to a fundraising concert of your choice

£20 per month

will support travel costs for our music leaders for up to one year

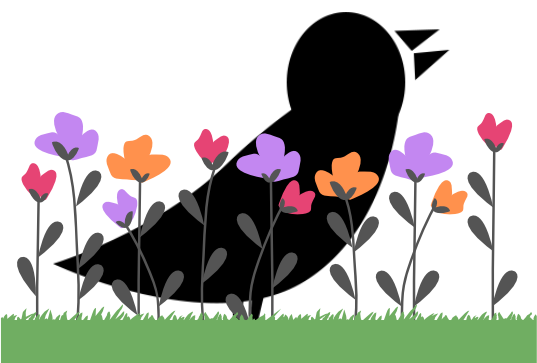
All of the above plus an exclusive invite to one prison-based performance per year

One Off Donations

Any contribution you can make is welcome!

Hawk

Become a sponsor of Sing Inside



Sing Inside sponsors might be local businesses interested in expanding their CSR by supporting our practical workshop delivery, or individuals keen to connect with a specific prison.

Their support covers the cost of running single workshops or our week-long intensive courses, which helps us deliver continuity.

Sponsors have the opportunity to attend performances in prisons and networking events with our other supporters, a great opportunity to share your services.

£250 per year

will sponsor one visit to a prison

Name of business/donor on Sing Inside's website, with information about your services

Access to our monthly newsletter and exclusive content on our mailing list

Invitation to one Friends' event per year

Free ticket to two Sing Inside fundraising events of your choice each year

Invitations to performances associated with your project

£500 per year

will sponsor two visits to a prison or one intensive course

All of the above plus invitation to all of our Friends' events each year

The opportunity to select the prison where you would like to fund a project, and write one blog for Sing Inside on a topic of mutual interest

Eagle

Become a patron
of Sing Inside



Our patrons are businesses or individuals who want to support Sing Inside's future sustainability. They provide essential core funding beyond our day-to-day running costs, allowing us to expand and build capacity. Patrons get the chance to co-host panel and networking events, have projects named after them, and receive at least one tailored team-building workshop for your organisation focused on using your voice confidently.

£1000+ per year

will support multiple visits to one prison, allowing us to work consistently and build relationships with residents and staff.

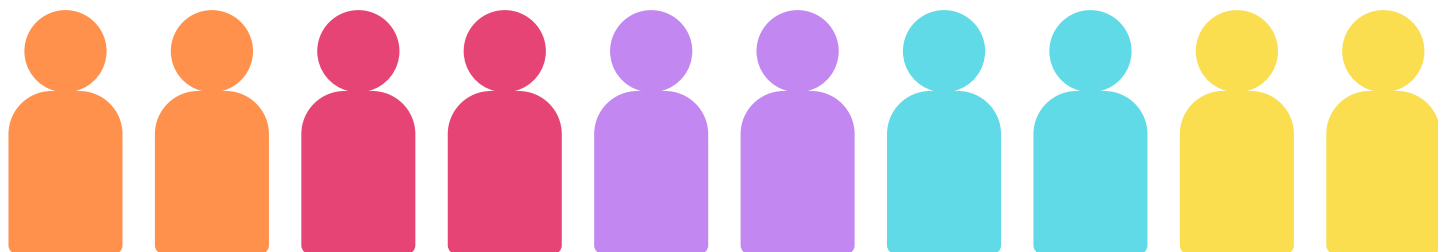
- Name and logo of business or individual on Sing Inside's website with details of your services
- Project named in association with you (The [donor name] HMP Long Lartin project)
- Access to our monthly newsletter and exclusive content on our mailing list
- Priority invites to Sing Inside events, including special performances in prisons
- Opportunity to host and facilitate one Sing Inside panel event on a topic of mutual interest, or a Friends' event to network and share your services
- Access to one team-building singing and voice workshop for up to 25 people, run by a member of the Sing Inside team

£5000+ per year

will support us to maintain strong working relationships with a minimum of 4 prisons for 12 months.

- All of the above plus the opportunity to host and facilitate two Sing Inside panel/discussion events on a topic of mutual interest, or a Friends' event to network and share your services
- Access to three team-building singing and voice workshop for up to 25 people, run by a member of the Sing Inside team

Volunteering with us



If you don't think you can make a regular donation, there are still lots of other ways you can work with us. Head to <https://www.singinside.org/current-opportunities> to find out more.

Volunteering with Sing Inside doesn't cost anything, but it's an amazing way to find out more about the prison system and share uplifting, community-forming musical experiences with other people. Volunteering is transformative for many people who get involved.

Our volunteer roles

Join us as a general visit volunteer to join our workshops

Join one of our local committees to steer activities in that area

Work with us as a project officer, sharing your skills in fundraising, digital, social media and more



If you have any questions about our support packages, please get in touch on info@singinside.org. We are more than happy to hear from you.



Photo credits: MBP Productions

Photograph taken at the final performance from a multi-day course at HMP Whitemoor, in partnership with Learning Together

Last updated November 2020